

Hand-made References for UV/Visible Fluorescence Photography



Made with materials with known fluorescent colors (seen from left)

1. Mylar
2. Ivory (old piano key)
3. white
4. Rose madder—pink
5. Zinc white—greenish white
6. Shellac—orange



UVA

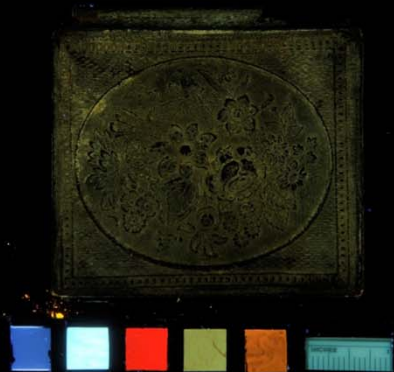


Visible light

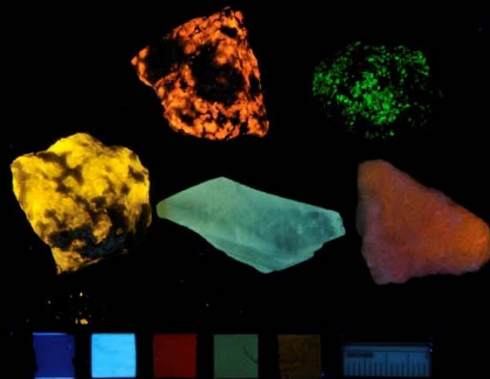
Disadvantages:

1. Fluorescent colors not consistent; cannot be used for color balance
2. Only one intensity; will unexposed if used for bright fluorescence
3. Fluorescent colors can change over time

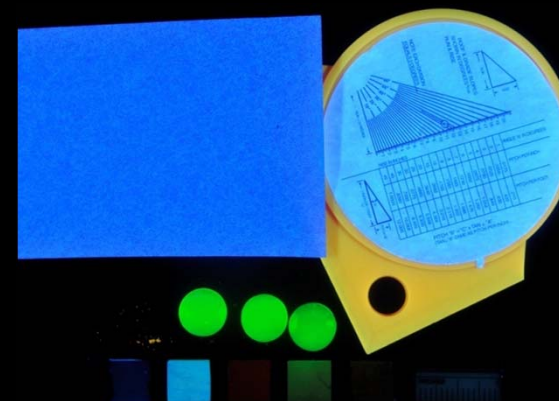
Problem with single reference card
Materials fluoresce with different intensity



Reference card
 overexposed for
 materials have
 weak fluorescence



Proper exposure
 For materials
 have moderate
 fluorescence



Reference card
 underexposed for
 materials have
 weak fluorescence